



IMAT

ITALIAN MARITIME ACADEMY TECHNOLOGIES

Training center & Nautical College

FAILURE IS NOT AN
OPTION

THE LEADER IN
ITALY

Area: 600,000 s.m. beach & pools

Classrooms: 40

Employees: about 160

Living Rooms: 165

Trainees/year: 40000

One of the largest **SIMULATOR COMPLEX** in the world

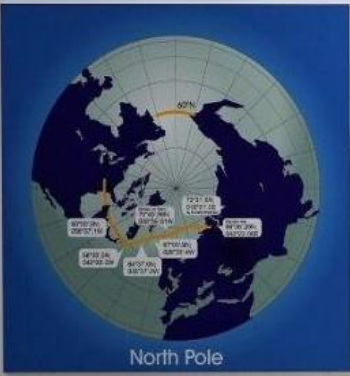
IMAT has care of training in the best way for any seaman,
covering the entire range of training, from basic training to any
advanced training for deck and engine officer .

Accreditation & Certification:

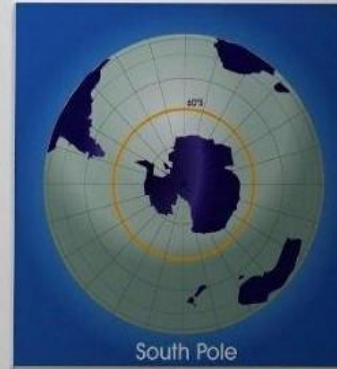


Transport Malta

BRIDGE SIMULATOR EXPLORER



2



WHO WE ARE?

Capt. Rosario TRAPANESE
Founder



IMAT is a company founded on 2005 by Capt. Rosario Trapanese

WE
DON'T
PROVIDE
COURSES,
WE
TRAIN !

Italian Maritime Academy Technologies is a state-of-the-art Maritime center of Excellence recognized by the Major Shipping companies in the world and from over 17 years, is one of the largest Training center in the world, covering an area of 600.000 Sq.m., one of the largest training simulation complex ever installed, the largest ones being tailored for the up-to- date cruise sailing.

Has students from 154 countries, a training capacity for more than 1.000 trainees per day, has trained more than 50.000 Deck and Engine Cruise officers, over 1.000.000 seafarers in the world, and has contract for Over 1200 vessels divided by:

Cruise > 100 vessels (referred as MSC, Carnival, Holland America group /Princess, P&O , P&O Australia, Seabourn, Carnival Maritime / Costa and Aida), most of the Italian Officers of Disney Cruise, Silversea , Norwegian Cruise line, Oceania, Regent , Royal Caribbean, and more.

OUR MISSION

OUR GOAL IS TO PROVIDE
BEST TRAINING FOR



SAFER SHIP

CLEAN SEAS

ZERO INCIDENT

IMAT is the only training center in Italy that offer the widest range of Training for Cruise, because of his Ventennal experience with The majors Companies and the most advanced training in the offshore sector having installed a world class Simulation Complex For deck and engine produced by Kongsberg and Wartsila Voyage, our partners for maritime training.

OUR PORTAFOLIO

- Passenger Ferry and cruise > 200 vessels
- Ro/Ro ferry and Car Carriers > 300 vessels
- Offshore vessels > 100 vessels
- Oil- chemical – Gas vessels > 300 vessels
- Dry cargoes > 100 vessels
- Miscellaneous and Tugs > 200 vessels

IMAT has changed his Vision moving from Simulators to Simulation Complex which includes:

- Deck and engine Simulators, DP simulators/Systems, ECDIS Simulators (including any Type specific),
- Radars, GMDSS, Liquid Cargo Handling Simulators for about 300 Workstations/ Simulators.

IMAT can offer a wide range of training, also custom made to follow the needs of any Company.

INTERNATIONALITY

Quality Assurance – Accreditation – Certification



Is the only one in Europe to hold a green flag.

Certificate issued by Italian Government named AUA – Environmental Certification) zero pollution for firefighting field.



ISO 9001:2015 - RINA

- Any simulator is in compliance with the International and IMO regulations according to the producer, from DNV to RINA to Nikkey.
- All simulator, prior to be accepted has to pass a SAT (site acceptance test by a classification Body) – RINA
- ISO 29990 Specific for Training Center
- ISO 31000 Risk Management
- ISO 21001/CSQA - 41743 Educational Organizations
- CSQA/231 Ethical code



AUTHORIZATIONS

- Is accredited by MiT/Coast Guard for all STCW courses.
- Is accredited by MIMIT for GMDSS
- Is accredited by MSAL for medical courses.
- Is accredited by Nautical Institute of London for DP courses.
- Is IMCA member from 2010
- Is INTERTANKO member from 2021
- Is IALA member from 2022
- Is GLOBAL MET member from 2024.
- Is accredited By Malta, Panama, and Bahamas Flag for STCW and recommended courses.
- Is an approved Marlin Test Center from 2019



BRIDGE & ENGINE SIMULATOR COMPLEX



The “**Challenger**” 360° bridge simulator has been installed in 2019 by Transas-Wartsila, it is connected with Class A Engine Room Simulator “**Neptune**”



At same time a Second 360° Bridge Simulator “**Explorer**” has been installed, too by Transas-Wartsila, also it’s connected with a Second-Class A Engine room simulator “**Atlantis**”



To complete the Simulation complex have been installed 21 mini-bridge (9 in the classroom A and 12 in the classroom F), all systems are connected in one complex.



In the 2023 to implement the Simulation Complex, the Transas-Wartsila installed the third 360° “Tug” Simulator; it’s connected to engine room “**Atlantis**” simulator so to create the first one simulator complex in the world.



FRONT VIEW



ALL SIMULATORS AVAILABLE



ALL ABOVE FOR A
TOTAL OF:

59 Radars

71 ECDIS

61 GMDSS workstations

40 Engine room workstations

14 DP workstations/Systems

10 High voltage workstations

22 LCHS workstations

18 LNG workstations

- A fourth 360° Kongsberg DP2 simulator "Polaris" is installed for offshore operations and for school scope.
- A DP Navis 4012 have been installed in Explorer simulator.



- In Class D nr. 6 SDP 11 plus nr. 3 K-Pos 11 "Kongsberg" have been installed.
- In Class C nr. 6 Navis 4011 have been installed.
- A liquid cargo handling simulator, 10 workstations, made by Kongsberg,
- An Engine room classroom with 12 workstations made by Transas-Wartsila,
- A second Engine room Classroom inside the Engine Room Mock -up with other 12 workstations, including emergency Steering room and Emergency generator room,
- A third Engine room class with 9 workstations specific for High Voltage Training,
- An ABB Breaker connected in the "Neptune" Engine room simulator.
- A lab with over 10 test benches for Engine complex
- GMDSS simulator
- An LNG Class A Bunkering Simulator

FACILITIES

IMAT HAS SIX TRAINING SITES AREAS



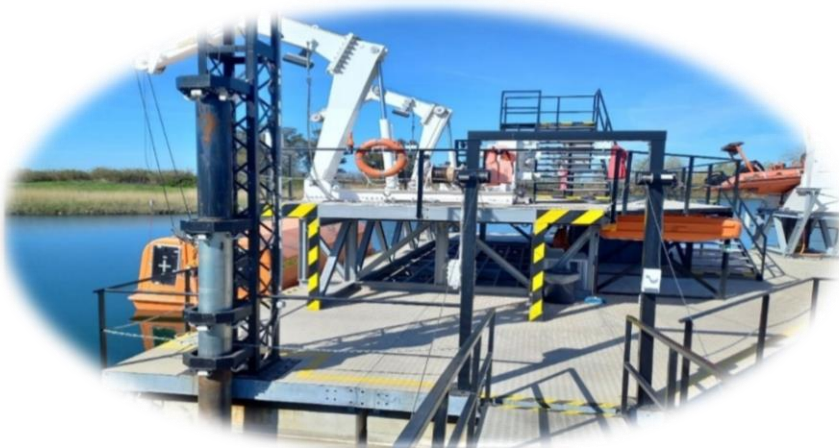
The first and second training area (external) 5 minutes from the main site, they are an area of more than 30.000 s.m, which includes for each one firefighting field: two shelters, inside the first one IMAT has installed his Unique Firefighting Yard in Europe rated “GREEN FLAG” (zero pollution), on 3 levels.



THE THIRD AND FORTH TRAINING AREA



At 5 minutes from the main site, IMAT, own an area of 360.000 s.m, which includes 1 lake of 150.000 s.m. where is installed the only Floating Platform for PSCRB and FRB training in Europe, exclusively dedicated to trainees for maritime practical training, exercise and testing.



A second Floating Platform Palfinger fully equipped has been made.

This area also includes deeply naturally preserved.

Two swimming pools FINA approved, about 250 s.m. each and with 4 metres depth, both equipped with a fixed platforms 3 meters high

THE FIFTH AND SIXTH TRAINING AREAS

FAILURE IS NOT AN OPTION!



IMAT has acquired a new area 84.000 s.m., for training purposes which include a 20.000 s.m. lake.

IMAT is now building a scale 1:1 bridge for training purposes and in the Second Building there is a Main Engine "Wartsila 12V 46-50df"



Most of the incident at sea depend on human error and now as never before there is the need of train as best as possible any seaman Shipping companies need to rely on specialized training center to guarantee the best standard in training on board and ashore.

IMAT can develop any customized Training to cover the needs of any shipping Company and train any seaman at the highest level. IMAT is the only nautical college in Italy and represent the evolution of any training center in Italy.

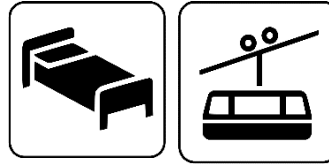


IMAT

ALL INCLUSIVE PACKAGE



- Training Matrix
- E- Learning Platform
- Ship's Equipment Operations & Maintenance Manuals Digitalization
- Remote supporting
- Center Platform and a SRTP Developing.
- Training on-going all year around with no limitations.



The offer includes complete Logistic Service for the trainees, such as Transfer to/from the Facility, Hotel, Meals, Italian Cultural Experience, etc.



Restaurant Full Service, allocated in the Training Center, offering Italian typical and local cousins, but also customized meals for different cultures or needs, such as:

- Vegetarian
- Vegan
- Celiac
- Muslim



We are very pleased to invite.

you to visit us!

To acknowledge the academic, the professional and the equipment potentials of the Training Center, while experiencing our Hospitality,

BE OUR GUEST!



IMAT STCW AND RACCOMANDED COURSES

Mandatory @ courses are accredited by Flag Administration and developed in according to country legislation.

Recommended ® courses are requested by shipping companies in order to train their seafarers on specific aspects,. These courses are tailored and they are developed considering Company requirements (ISM), IMO model and International conventions (SOLAS, MARPOL and MLC).

AREA 1 - BASIC TRAINING

PERSONAL SAFETY AND SOCIAL RESPONSABILITIES "PSSR"@

BASIC FIRE FIGHTING@

REFRESHER BASIC FIRE FIGHTING@

ADVANCED FIRE FIGHTING@

REFRESH ADVANCED FIRE FIGHTING COMPLETE@

REFRESH ADVANCED FIRE FIGHTING REDUCED@

FIRE FIRE FIGHTING HIGH RISK®

LIVE FIRE FIGHTING®

PROFICIENCY IN PERSONAL SURVIVAL TECHNIQUES@

REFRESHER PERSONAL SURVIVAL COMPLETE@

REFRESH PERSONAL SURVIVAL REDUCED @

ELEMENTARY FIRST AID@

SHIP SECURITY AWARENESS@

THE ONLY TRAINING CENTER ACCREDITATED FOR HOTEL BST (H-BST) ONLINE

AREA 2 - DANGEROUS GOOD

BASIC TRAINING FOR OIL AND CHEMICAL TANKER@

BASIC TRAINING FOR LIQUEFIED GAS TANKER@

ADVANCED TRAINING FOR OIL TANKER@

ADVANCED TRAINING FOR CHEMICAL TANKER@

ADVANCED TRAINING FOR LIQUEFIED GAS TANKER@

BASIC LNG "Liquefied Natural Gas"@

REFRESH BASIC LNG@

ADVANCED LNG "Liquefied Natural Gas"@

REFRESH ADVANCED LNG@

H2S "HYDROGEN SULFIDE"®

HAZMAT BULK CARRIER®

IHM "INVENTORY HAZMAT MATERIAL"®

OIL POLLUTION ACT "OPA 90"®

IMDG CODE®



FAILURE IS NOT AN OPTION!



FAILURE IS NOT AN OPTION!

AREA 3 - OPERATIVE

PROFICIENCY IN SURVIVAL CRAFT AND RESCUE BOATS "PSCRB"@
REFRESH PSCRB COMPLETE @
REFRESH PSCRB REDUCED @
PROFICIENCY IN FAST RESCUE BOATS "PFRB"@
REFRESH PFRB COMPLETE @
REFRESH PFRB REDUCED @
MARINE EVACUATION SYSTEM "M.E.S. - VEC" Training®
MARINE EVACUATION SYSTEM "M.E.S. - VEC" Training®
RIGGING & LIFTING OPERATIONS®
LASHING & SECURITY CARGO®
ENCLOSE SPACE ENTRY®
AMOS BUSINESS®
COXWAIN TRAINING FOR LIFEBOAT & RESCUE BOAT®
COXWAIN TRAINING FOR FAST RESCUE BOAT®
TENDER TRAINING (COXWAIN WITH PASSENGERS)®
LIFE SAVING APPLIANCES"LSA" PERSON IN CHARGE®
EFFICIENT DECK HAND - SHIP MAINTENANCE®
EFFICIENT DECK HAND - CERTIFIED BY THE MAKER FOR THE LSA®
TUG MASTER®
CRANE OPERATOR®
SPECIALIZED FITTER AND SYSTEM MAINTENANCE®
CONTAINER REEFER OPERATION and MAINTENANCE®

AREA 4 - SECURITY

COMPANY SECURITY OFFICER "CSO"@
REFRESH COMPANY SECURITY OFFICER "CSO"@
SHIP SECURITY OFFICER "SSO"@
REFRESH SHIP SECURITY OFFICER "SSO"@
PORT FACILITY SECURITY OFFICER "PFSO"@
REFRESH PORT FACILITY SECURITY OFFICER "PFSO"@
SHIP SECURITY DUTIES@
PORT FACILITY SECURITY AWARENESS@
PORT FACILITY SECURITY DUTIES@
CYBERSECURITY AWARENESS®
CYBERSECURITY BASIC®
CYBERSECURITY ADVANCED®



AREA 5 - SAFETY

CROWD & CRISIS@
REFRESH CROWD & CRISIS@
PEOPLE WITH REDUCED MOBILITY "PRM"©
LEADERSHIP & TEAMWORK - BRIDGE RESOURCE MANAGEMENT-"BRM"@
LEADERSHIP & TEAMWORK - ENGINE RESOURCE MANAGEMENT "ERM"@
REFRESH BRM - LEADERSHIP & TEAMWORK©
REFRESH ERM - LEADERSHIP & TEAMWORK©
USE OF LEADERSHIP AND MANAGERIAL SKILLS@
GMDSS GENERAL OPERATOR'S CERTIFICATE "GOC"@
GMDSS RESTRICTED OPERATOR'S CERTIFICATE "ROC"@
GMDSS LONG RANGE CERTIFICATE "LRC"@
GMDSS SHORT RANGE CERTIFICATE "SRC"@
BRIDGE RESOURCE MANAGEMENT (BRM) PILOT©
PILOT SEMINARS TRAINING – DM 118/2018@
BRM 1®
BRM 2 EMERGENCY MANAGEMENT®
VESSEL RESOURCE MANAGEMENT "VRM"®
MARINE ACCIDENT & INCIDENT INVESTIGATION®
REFRESH MARINE ACC. & INC. INVESTIGATION®
RISK ASSESSMENT & ROOT CAUSES ANALYSIS®
REFRESH RISK ASSESSMENT & ROOT CAUSES ANALYSIS®
SHIPBOARD SAFETY OFFICER®
REFRESH SHIPBOARD SAFETY OFFICER®
PORT STATE CONTROL "PSC"®
DPA®
MARITIME LABOUR CONVENTION "MLC" 2006®
RASAL - DLGS 271-99 & DLGS 81-08®
REST AND FATIGUE®
RIGGING & LIFTING®
PTW & WORK AT HEIGHT®
"HSE" MANAGER TRAINING COURSE®
DRY DOCK MANAGEMENT®
COMPETENCE MANAGEMENT SYSTEM "CMS"®
BASIC STABILITY AND USE OF EASECON/NAPA®
ADVANCED STABILITY AND USE OF EASECON/NAPA®
MOORING & UNMOORING TRAINING®
DAMAGE AND FLOODING®
MANAGEMENT OF CHANGE®
TMSA AWARENESS®
NAVIGATIONAL AUDITOR AWARENESS®
ISM & ISPS COURSE®



FAILURE IS NOT AN OPTION!





AREA 6 - NAVIGATION

RADAR BASIC@
RADAR ARPA@
RADAR ARPA SAR BTW©
POLAR CODE BASIC@
REFRESH POLAR CODE BASIC©
POLAR CODE ADVANCED©
REFRESH POLAR CODE ADVANCED@
ECDIS@
ECDIS TYPE SPECIFIC TRANSAS 4000 NEW@
ECDIS TYPE SPECIFIC SAM PLATINUM@
ECDIS TYPE SPECIFIC KELVIN HUGES@
ECDIS TYPE SPECIFIC FURUNO FMD@
ECDIS TYPE SPECIFIC FURUNO FEA@
ECDIS TYPE SPECIFIC JRC 7201/9201@
ECDIS TYPE SPECIFIC SPERRY MARINE VISION FT@
ECDIS TYPE SPECIFIC MARIS 900@
ECDIS TYPE SPECIFIC EGLOBE G2@
ECDIS TYPE SPECIFIC RAYTHEON ANSCHUTZ@
ECDIS TYPE SPECIFIC SAM 1100@
ECDIS TYPE SPECIFIC SAM 9330@
BTM®
REFRESH BTM®
BTM - STRAIT OF MESSINA®
BTM - STRAIT OF DOVER (ENGLISH CHANNEL)®
BTM - STRAIT OF BOSFORO & DARDANELLI®
BTM - STRAIT OF MALAMOCCO®
BTM - STRAIT OF ACQUA DEI CORSARI (PALERMO)®
SHIP HANDLING®
SHIP TO SHIP "STS" OPERATION®
COLREG®
MANOUVERING BASIC®
MANOUVERING WITH AZIMUTH THRUSTERS®

AREA 7 – ENGINE & ELECTRONIC

HV OPERATIVE@
HV MANAGERIAL@
MEM "MARINE ELECTRICAL MAINTENANCE"®
ENGINE EFFICIENT OPERATION®
HYBRID TECHNOLOGY®
NAVAL AUTOMATION LEVEL 0 – LEVEL 1 AND LEVEL 2 APSS WARTSILA®
ENGINE ROOM SIMULATOR "ERS"®



FAILURE IS NOT AN OPTION!



AREA 8 - VET

MARITIME ENGLISH FOR HOTEL DEPARTMENT®
MARITIME ENGLISH®
TRAIN THE TRAINER - IMO MODEL COURSE 6.09@
MASTER AND CHIEF MATE - IMO MODEL COURSE 7.01@
CHIEF ENG. AND SECOND ENG. - IMO MODEL COURSE 7.02@
COMPETENCE EVOLUTION SYSTEM®
MULTICULTURAL AWARENESS®
MARLIN TEST®
TOSE (SPEAKING)®

AREA 9 - HEALT

FIRST AID@
REFRESH FISRT AID@
MEDICAL CARE@
REFRESH MEDICAL CARE@

AREA 10 - OFFSHORE

DP INDUCTION (BASIC)®
DP SIMULATOR (ADVANCED)®
DP MAINTENANCE®
DP REVALIDATION®
DP AWARENESS (FAMILIARIZATION)®
OSV CODE®
DP REFRESHER AND COMPETENCY ASSESSMENT®

AREA 11 - ENVIROMENTAL

MARPOL®
ENVIROMENTAL AWARENESS®
FUEL EMISSION®
SEA EMISSION®
GARBAGE - WASTE MANAGEMENT®
"OPRC" INTRODUCTORY LEVEL®
"OPRC" OPERATIONAL LEVEL 1®
"OPRC" TACTICAL LEVEL 2®
"OPRC" STRATEGIC LEVEL 3®
CONTINGENCY PLANNING IN OIL POLLUTION®
SHIP BIOFOULING®
ENVIRONMENTAL OFFICER COURSE®
HACPP®



FAILURE IS NOT AN OPTION!

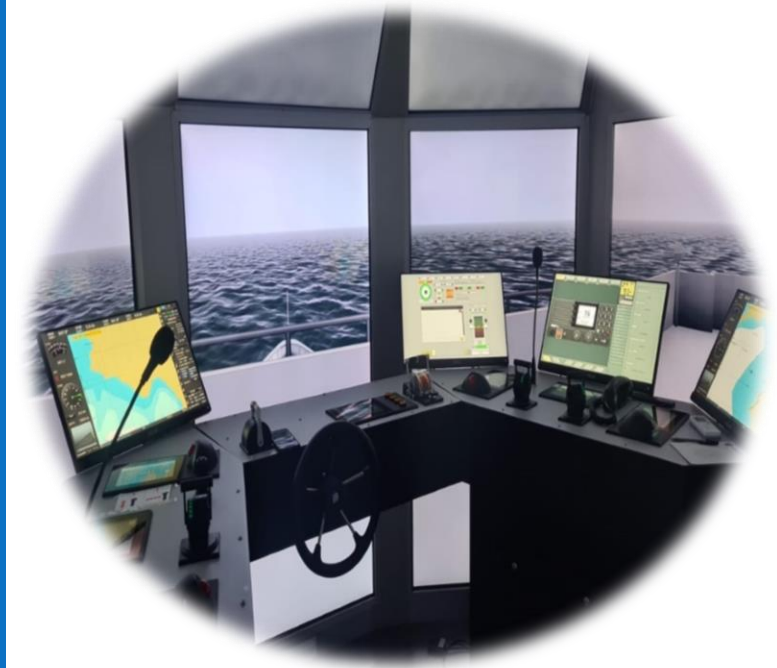
ASSESS AND PROMOTE SKILLS

CERTIFY CREW LEVEL

The growing needs of today's maritime world require globally shared training standards.

We introduced into our training system, certification tools used by the best shipping companies worldwide.

We offer our customers growth opportunities through assistance in manning processes.



ANALYZE AND IMPROVE THE CREW STATS AND BENCHMARKING

We evaluate the results obtained in the various tests using accurate statistics, designed according to market needs. We have created an advanced e-learning platform to support the skills management system.

We compare the results obtained by the crew with the standard levels of the global maritime industry.

We highlight areas of improvement and intervene through targeted training activities.





The 'Power of Personality'



FACET 5

The most modern and advanced personality analysis tool available today. Used by organizations and consulting firms around the world, Facet5 supports the human capital management of each crew or team, which aims to express the full potential.

Offered in over 30 languages and supported by state-of-the-art technology, Facet5 is ideal for anyone who needs to understand human behavior in a working environment.

Thanks to a simple model of interpretation and a common language, it is able to explain how people differ in motivation, attitude, and behavior; and most importantly, the challenges to overcome and the personal goals to achieve. Facet5 can be applied throughout the working life of human resources.

It has been recognized that one of the most valuable contributions to understanding personality theory is that it can teach people how to work together effectively.

CREW EVALUATION SYSTEM



THE SYSTEM TO EVALUATE YOUR CREW

CES is one of the most used tools in the world to assess crew knowledge, used by more than 350 companies, consists of a database of over **6500** multiple-choice questions. CES allows you to build a tailor-made test, adhering to the needs of the company, in order to highlight the weaknesses and strengths of each crew.

The test can be delivered according to each figure professional working in the maritime sector. The test results are analyzed and compared with the standard levels of the global maritime industry.





THE MOST REQUESTED IN THE WORLD

MARLINS CERTIFICATIONS

We certify knowledge of the English language, using the most requested test in the world, the Marlins Test.

Certification created for Seafarers, officially recognized by **UK Maritime Coastguards Agency** as evidence of proficiency in Maritime English and useful for the application of the STCW flag state endorsement.

The test is carried out on a web platform or with an interview.

Types of tests are:

Generic Test for seafarers, designed to certify the general level of maritime English.

Marlins English Language Test for Cruise Ship Staff, designed for cruise ship industry;

Marlins English Language Test for Offshore Workers, designed for the marine energy industry;

TOSE, a test of spoken English, is designed to certify the communication skills of seafarers



HCCP-EIPASS-HEALTH AT WORK

PROFESSIONAL COURSES AND CERTIFICATIONS

In line with market requirements and regulations we offer training courses and professional certifications to support the maritime industry:

- HACCP courses for the mandatory training of food workers;
- Training courses for health at work;
- We certify IT skills through EIPASS courses and certifications

